

SZN1204D-WIR White/IR Strobe/Flash

All-in-one Intelligent Traffic Lamp



Product Overview

SZN1204D-WIR is designed as an all in one professional traffic lamp integrated with high efficacy Xenon flash lamp and strobe LED, which provide both white and infrared light sources for high speed number plate recognition . Through HD smart camera control, it provides high speed synchronous flash light for snapshot and it realizes the function of light compensation for the capture of HD intelligent camera.

Feature

- Low recycling time, applied for over speed snapping
- Peak power flashing, effectively enhance quality of pictures for number plate, human face, vehicle body
- Adopts accurate constant current technology for LED control, ensures the brightness and service life of LED
- Support electrical level trigger (switching value trigger could be customized)
- Support LED strobe, white light Xenon flash and IR light Xenon flash
- Easily installation and adjustment by universal mount
- Times of flash displayed could be customized
- Grating for effectively reducing light pollution could be customized

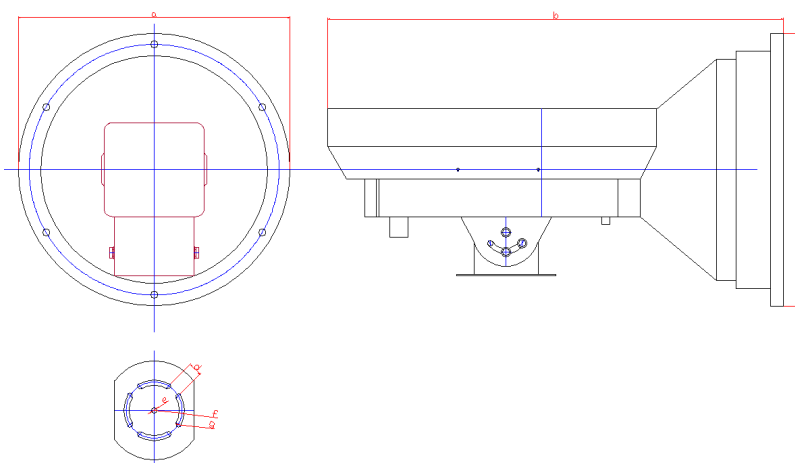
Technical Specification

Item	Specification
Working voltage	AC220V±10%/48Hz~52Hz
Color temperature	5500K±500K
Flash energy	150J
Power consumption	average power<100W(@1 flash/s), Maximum power In instant<300W
Peak flash duration	1/30ms
Recycle time	< 50ms
LED Type	Original high-power Cree white LED
Quantity of LED	24 pcs
LED color temperature	3000K~3200K
Angle of LED	10 degree

Intelligent Traffic Flash Lamp


LED cover range	1.5 lane
Brightness control of LED	Brightness can be adjusted by changing duty cycle of external input PWM wave
Power consumption of LED strobe	Max. 30W (The actual power is related to the control mode)
Power consumption of LED flash	Peak 200W (under infrared mode it can be set ON/OFF or power control)
Service life of LED	≥50000hours
Effective distance	16m~25m
Flash trigger method	5VDC/ electrical level (switching value could be customized)
Strobe trigger method	5VDC/ electrical level (switching value could be customized)
IR switch trigger method	5VDC/ electrical level (switching value could be customized)
White light/IR switch	Standard mode A3: During night time, input 5VDC to yellow line and green line, the IR switching board will be closed; during daytime, don't input to yellow line and white line, the IR switch board is opened. Mode A2: During night time, led strobe ON, IR switching board closed; during day time LED strobe OFF, IR switching board opened. Mode B3: RS485 controlled
Working temperature	-40~+80°C (within -40°C is save using range /light decay), (when - 40 °C cold start, wait 30 minutes before starting the IR switching board)
Working humidity	5%~90%@40°C, No condensation
Heater	<10°C heater on
RS485	Brightness can be controlled by RS485 by (customized)
Cover range	1 lane
Application	Toll free station and over speed snapping
Pulse and comprehensive protection	False trigger protection (while the flash interface mistakenly accesses the strobe signal, the flash is suspended until the strobe signal is removed) (when the LED flash interface mistakenly accesses the strobe signal, the LED will flash 5 times to indicate the access error signal)
Status monitoring function	Voltage value, current value, fault and other state monitoring functions (customized)
Flash times display function	Flash count function (customized)
Operate life	≥20million times
Protection level	IP65
Net Weight	6.74kg
Dimension	340mm*466mm*340mm


Picture & Dimension

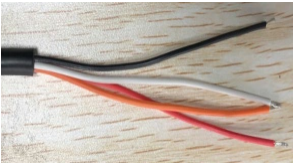



- a: 340mm b: 466mm
c: 340mm d: 17.5mm
e: 7mm f: 35mm
g: 3.5mm

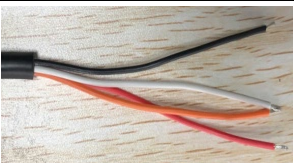
Wiring Definition

Power wire	Base pin	Color of outgoing wire	Signal
	1	Brown	Input AC220V L-line
	2	Blue	Input AC220V N-line
	3	Yellow-Green	Input AC220V PE

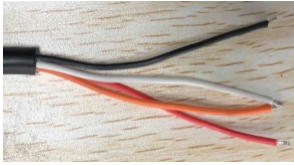
Standard mode A3 control wire	Base pin	Color of outgoing wire	Signal
	1	Red	Flash trigger + (electrical level)*
	2	Black	Flash trigger - (electrical level)*
	3	Orange	LED Strobe trigger + (electrical level)*
	4	White	LED Strobe trigger - (electrical level)*
	5	Yellow	IR switching + (electrical level)*
	6	Green	IR switching - (electrical level)*

Mode A2 control wire	Base pin	Color of outgoing wire	Signal
	1	Red	Flash trigger + (electrical level)*
	2	Black	Flash trigger - (electrical level)*
	3	Orange	LED Strobe trigger + (electrical level)*
	4	White	LED Strobe trigger - (electrical level)*

Mode B3 control wire	Base pin	Color of outgoing wire	Signal
	1	Red	Flash trigger + (switching value)*
	2	Black	Flash trigger - (switching value)*
	3	Orange	LED Strobe trigger + (switching value)*
	4	White	LED Strobe trigger - (switching value)*
	5	Yellow	RS485A
	6	Green	RS485B

Mode B2 control wire	Base pin	Color of outgoing wire	Signal
	1	Red	Flash trigger + (switching value)*
	2	Black	Flash trigger - (switching value)*
	3	Orange	LED Strobe trigger + (switching value)*
	4	White	LED Strobe trigger - (switching value)*

Intelligent Traffic Flash Lamp

Mode C2 control wire	Base pin	Color of outgoing wire	Signal
	1	Red	Flash trigger + (switching value)*
	2	Black	Flash trigger - (switching value)*
	3	Orange	LED Strobe trigger + (electrical level)*
	4	White	LED Strobe trigger - (electrical level)*

Matters need attention

1. It is forbidden to install this product upside down.
2. Except artificial reason and the force majeure, the light tube is under 20million times warranty, control circuit has 24months warranty, lifetime maintenance with cost price.
3. This lamp is expendable, light decay is normal phenomenon after long time use.
4. For outdoor electronic product safety operation, the ground wire must be connected to the qualified ground device to protect the products.
5. The product powered with high voltage. It is strictly prohibited to open personally.
6. To avoid water in, the power port must be downward and the power wire must not be tighten.
7. We seek to make the accuracy between product and data, but we can't cover all the application field. Specification and design are subjected to change without notice.